



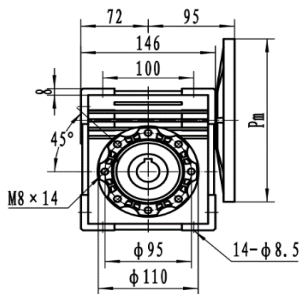
**DATOS MOTOR**

POTENCIA	2HP
REVOLUCIONES	1760
FRECUENCIA	60HZ
TORQUE MOTOR NOMINAL	8,3
CARCASA (PAM)	90(B5)
TIPO BRIDA	FF-165
EFICIENCIA MOTOR	IE 2

**DATOS REDUCTOR**

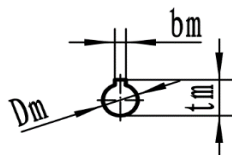
REFERENCIA	541103
TIPO	ORTOGONAL
MODELO	FCN
MATERIAL	ALUMINIO
CARCASA	63
RELACION DE TRANSMISION i:	20
VELOCIDAD SALIDA	88,00
TORQUE MAXIMO	134
TORQUE OPERACIÓN	134
FACTOR DE SERVICIO	1,0

**PLANOS REDUCTOR**

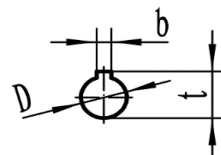


**FCN 63**

Input shaft hole



Output shaft hole



Dimensions of output shaft		
D H7	b D10	t
25	8	28.3

	Pm	Dm	bm	tm
63B5	140	11	4	12.8
71B5	160	14	5	16.3
71B14	105			
80B5	200	19	6	21.8
80B14	120			
90B5	200	24	8	27.3
90B14	140			

